



Issue 236

May 2024

T'Owd Man's

Mutterings

Poster by Archie, Year 5

THE BIG VILLAGE CLEAN UP!

SEE PAGE 6 FOR MORE...



In folklore T'Owd Man is a spirit that inhabits mines and caves. T'Owd Man of Bonsall is a carved figure of a miner that was taken to Wirksworth when St James church was being refurbished in the 1860s. It was said that strange noises coming from the old Ball Eye mine at the end of Church St. were of T'Owd Man muttering

CHURCH DIARY

St James

Church Services for May are:

Sunday 12 May Eucharist at 9.30am

Sunday 26 May Eucharist at 9.30am

Bonsall Church Café

Refreshments are available in church from 12 noon to 3pm on Saturdays, Sundays and Mondays.

We offer ham, cheese and hot sausage cobs, home-made soup and cakes all at reasonable prices.

The ukulele band Ukewirks will be playing in Church on Open Gardens Sunday June 2nd 1-2pm.

The Wirksworth Team Ministry

Village Life Church (High Street)

Sunday 10.30am Worship service (doors open from 10am for drinks)

Youth club 6.30pm till 8.30pm

School Yr7 to Yr11
(Contact us for more information)

Tuesday 2-4pm Craft Club
(Bring your own or learn something new)

Wednesday 7pm Small group
(Contact to check venue)

Thursday 9.30am Prayer

Coffee morning
9 May, 10am - 12pm

Email:
villagelifechurchbonsall@gmail.com

Call/text: 07988 071682

Pastor Matthew Quinn

Bonsall Wesleyan Reform Chapel (The Dale)

Sunday Services are at 6.15 pm.

All are welcome to join with us.

Please see the Chapel Notice Board for other events.

Judy Land
Tel 824223

CHURCH NEWS

Photo by Brett Evans Biedscheid



A year is a short time.....some would say.

As you read this, we will be into May in 2024, and I will be heading full tilt towards my one-year anniversary living and working amongst you all. There are times when we naturally stop and think about where we are, what we are doing and how the future might look. One such time might naturally fall at an annual anniversary, just like now.

I arrived here with 5 years of experience in a similar setting so very little of what I have experienced so far is brand new. What I have found here in beautiful Derbyshire is a group of people who whilst not necessarily keen on church on Sunday mornings, do have love for the church buildings in their village and affection for them. I have also found small groups of people who do attend church for the regular schedule of services and work hard to keep those churches open, on behalf of the people

they share their village with. These small group love their churches and love their faith and wish that others would feel the same, and join them for these services. We are of course very grateful to those who join us for our major and important festivals and we hope that when you do, you will enjoy what happens, will hear something that encourages you and will in due course think about what you believe and whether you will join us on a more regular basis. Whatever you do in the longer term we hope you will continue to love your parish church and join with us when you can. You will always be very welcome. Thank you all for a wonderful first year.

Revd. Neil Griffiths

Catholic Church Services

Our Lady and St. Teresa of Lisieux

Gorse Bank, Wirksworth

Mass times - Sundays - 8.45 a.m., Holy Days 7 pm., every Tuesday Mass at 9.30 a.m. (No bookings needed.)

Parish Priest: Fr. Ka Fai
(01335 418902)

Our Lady and St. Joseph Church

Joseph's Street, Matlock

Mass times - Saturday reciting of rosary at 3.30 p.m. Vigil Mass at 4.00 p.m. and reciting of rosary at 5.30 p.m., Mass at 6.00 p.m., Sundays 8.30 a.m. and 10.30 a.m. (Check with the newsletter – you may need to book for weekend masses.) Week day masses - No mass on Monday, Tuesday, Wednesday and Thursday 9.30 a.m. reciting of rosary and mass at 10.00 a.m., and Friday 5.30 p.m. reciting of rosary and mass at 6.00 p.m.

Confessions Saturday 10.30-11.30 a.m.
Parish Priest: Fr. Robbie O'Callaghan.

Chestnut Farm HOLIDAY COTTAGES

Choose from any one of four unique self-catering holiday cottages, all situated within a rural farm setting.

The Dairy	1 bedroom cottage (sleeps 2)
The Barn	2 bedroom cottage (sleeps 4)
The Farrows	2 bedroom cottage (sleeps 4)
Barn End	3 bedroom cottage (sleeps 6)



Enquiries / Bookings: 01629 820946

www.chestnutfarmcottages.co.uk

chestnutfarmholidaycottages

Abel Lane, Uppertown, Bonsall DE4 2AW

FLOODLIGHTING



Photo by Brett Evans Biedscheid

May 30th is when Wendy, Neil and their families remember Rita, their Mum, with love on her birthday.

This is the last month until September for floodlighting items. If you would like to be included in September, please let me know by the middle of August.

Di Moor

dimoor2014@yahoo.co.uk
tele. 824376

details for payment are
Nat West 60.14.15

Acc no 80567622 PCC of
Bonsall Ref. fld light

LETTERS

Lunch Club

The Lunch Club met on 17 April and enjoyed a great meal followed by a quiz and tea or coffee. This month we were able to offer a choice of main course, either fish pie or cottage pie, both served with mixed vegetables and croquette potatoes. This was followed by a delicious fruit crumble made with local fruits and served with cream or custard.

The team would like to thank our guests for their understanding when we had problems with the cooker and water heater which meant service was much slower than usual. Also, many thanks to Ann and the Fountain for coming to our rescue and letting us use their ovens to tide us over!

Next month's meeting will be on 15 May. We welcome anyone from the village so if you would like to join us and did not book via the sign-up sheet, please phone and book to 01629 826309 by 8 May giving contact details and telling us of any special food requirements or allergies.

Last week we held our annual staff meeting and discussed the last inspection report - 5 star - and planned our preparations for the next one!

Hoping to see you in May

Jenny March

Pending Road Closure

Please find details of the proposed road closure for High Street, Bonsall.

Close High Street Bonsall for STW pipe repair 2 July to 4 July 2024

You can view the order on this link
<https://one.network/?tm=138336319>

For any queries, please email TTM.
mailbox@derbyshire.gov.uk

Kind Regards

**Derbyshire Highways
Hub Place Department**
Derbyshire County Council |
County Hall | Matlock | DE4 3AG

The March Mock Auction for Bonsall School

What a superb evening! A huge thank you to all who donated and all who bought, either in advance or at the event. The support from the village and from those living nearby was amazing; the King's Head was full; the bidding didn't stop; all was sold and, with the takings from the raffle, close to £2,500 was raised.

All from Bonsall CE VA School are so grateful as so many additional resources can now be bought.

A special thanks to Sam and Andy from the King's Head; to Richard Taylor who led the evening so incredibly and to Kath Taylor for all the support she gave to the organisation of the evening.

Thank you.

Bonsall PTFA

BARRE FITNESS CLASSES

BARRE FIT

(general full body workout)

Weds 9.30am Ashover Parish Hall Thurs
9.15am Burton Institute, Winster

BARRE BLITZ

(HIIT workout to tone, sculpt, burn fat and improve cardio)

Weds 5.45pm Burton Institute, Winster

BARRE FLOW

(slower paced class focusing on balance, stability & stretch)

Thurs 10.30am Burton Institute, Winster

Text or call
07852299927 for
further info & to book
your spot

We are PEAK DESTINATIONS

Your local travel agent that travels with you
Here to help you from your first enquiry to the moment
you land home. Let us guide you through the thousands of
destinations and hundreds of tour operators to ensure
you get the holiday that's right for you.

<https://peakdestinations.notjusttravel.com/>



**NOT JUST
TRAVEL**

Call Alison on 07397 506705



Opening hours
8.30am - 4pm
Tuesday - Sunday

Visit Bonsall's Award Winning
Fountain Tearooms

For: Breakfasts, Lunches, Snacks,
Cakes and Scones, Ice Creams,
Hot and Cold Drinks etc.

Or stay in our luxurious en suite Bed
and Breakfast rooms - ask for details!

www.thefountainbonsall.co.uk

The Fountain Tearooms, 1 Yeoman Street
Bonsall DE4 2AA P: 01629 824814
enquiries@thefountainbonsall.co.uk

VILLAGE NOTICEBOARD



Heritage Walk, May 24: Bonsall and the Via Gellia

Join Tony Wood on a walk to discover some of the industrial heritage of the lower part of Bonsall down to the Via Gellia and back. This is the first of our evening walks so we are meeting at 6.30pm at the Lorry Park at Bonsall. Charge of £3 - please bring the correct change.

Any questions about this walk please phone the Peak District Mining Museum on 01629 583834.

**Peak District
Mining Museum**

Bonsall Carnival – It's a Knockout 2024

This year we've decided to hold the 'It's A Knockout' competition at 2pm on Sunday 21 July as a pre-carnival event. As this coincides with the end of the school year, we hope lots of you will take the opportunity to celebrate by entering a team! Each team should have a minimum of 6 competitors. Fancy dress optional, but remember you'll need a Joker!!

Watch this space, and the Carnival Facebook page, for updates and info regarding this year's games!

To enter a team or for more information contact Jayne Allsop on 07415 607016 or email jayneallsop18@gmail.com

Bonsall Carnival Committee



Annual Fundraiser for Ukraine Charity

The enclosed poster gives details of our annual fundraising event for the Bonsall & Derbyshire Dales Branch of The Helping Hand for Ukraine charity, of which I am the Chairman, the funds going to help children and their families living in villages in northern Ukraine to help relieve the symptoms of the ongoing war with Russia.

Chris Broome
Tel 07900 330209

H. Strange & Son

Electrical Engineers est. 1959
The Fountain, The Dale, Bonsall

- Domestic lighting and power systems
 - Night Storage Heating
 - Fire Alarm Systems
 - Emergency Lighting Systems
 - Telephone Extensions
 - Inspection Testing & Certification
 - Portable Appliance Testing
 - Emergency Callouts
 - Fault Finding & Rectification
 - Electric Underfloor Heating Systems
 - Minor Works & Repairs
 - Boiler & Central Heating Controls
- DCC Trusted Trader

Free competitive quotations on all our services

Tel: 01629 823241

Email: hstrangeandson@hotmail.co.uk

Web: www.hstrangeandson.co.uk

ROBIN MAYCOCK FAMILY BUTCHERS & BAKERS FREE HOME DELIVERIES TO BONSALL EVERY FRIDAY MORNING.

Beef, Lamb, Pork, Free range Chicken,
10 varieties of sausage, Meat pies,
Ready Meals, Puddings, Cheese, Eggs
Fruit & Veg
& much much more

OUTSIDE CATERING OUR SPECIALITY

Call **01629 534333** for a brochure
& product list or view our website
at www.robinmaycockbutchers.co.uk
We also supply the Barley Mow Inn
with meat for their wonderful
bar meal menu.

Hollies Farm Plant Centre

Uppertown, Bonsall DE4 2AW
01629 822734

Specialist Growers of Perennials,
Hanging Baskets, Planted
Containers, Bedding & Basket
Plants & Compost

MON - SAT 9-5
CLOSED WEDS
SUN 10-4

www.holliesfarmplantcentre.co.uk

[holliesfarmplantcentre](https://www.facebook.com/holliesfarmplantcentre)

[holliesfarmplantcentre](https://www.instagram.com/holliesfarmplantcentre)

VILLAGE NOTICEBOARD



Photo by Jane David

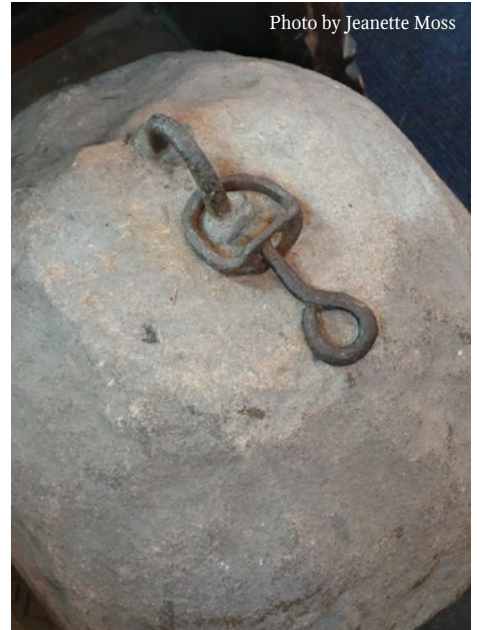


Photo by Jeanette Moss

Wakes Weeks

Originally Wakes Weeks were religious festivals in the north of England but around the industrial revolution, they developed into secular, unpaid regional holidays. This gave the big manufacturing companies time to service their machinery and the workers time for some fun.

Different communities held a whole range of sporting and athletic competitions. In some places this included cock fighting and bull baiting. Some villages organised trips to the seaside.

In August, 1834, The Derbyshire Courier reported on Bonsall Wakes Week. Apparently a group of 'thirty to forty blackguards' arrived in the village with bull dogs and clubs intent on enjoying the sport of bull baiting. The bull was tethered to a large stone sphere near The Cross. The Curate, possibly Mr Henry Sim, tried unsuccessfully to stop the 'cruel sport'. When persuasion failed, he eventually bought the bull for one guinea and removed it from the scene along with the stone sphere. The blackguards, however, still out for entertainment, spent their unexpected money causing chaos in the village inns that evening.

The stone sphere can still be seen under the front pew in St James' Church. It was a dangerous sport and not just for the bull. A fatality amongst the spectators was reported one year in Kirk Ireton.

Mr Sim was intent on saving the villagers from corrupt experiences and had also banned a theatre group from performing in Bonsall. Walking contests, however, were a more peaceful and safer sport which caused a lot of excitement in the village. In 1903, the challenge was to walk 'heel and toe' from The Cross to the Holly Bush at Grange Mill and back again. This was a distance of about eight miles. Herbert Millward was first back with a time of 1 hour, 21 minutes and 1 second. This was 3 seconds ahead of James Rolley. Third was James Bunting in 1 hour 23 minutes. Mr H. Henstock gave up 'half way back'. 1st prize was a

10 stone bag of flour, 2nd prize, a pair of boots valued at 15s. 6d, and 3rd prize was a ham worth 7s 6d.

A slightly less taxing contest was the broth eating, also held at The Cross. Today the fun of Wakes Week and the Bonsall Carnival have blended in one huge list of events lasting over a week and is still looked forward to with much enthusiasm.

Jeanette Moss

Some of this tale is retold from 'Bonsall, a Village and Its History.'

! TURN PAPER AROUND !

FOR THE LATEST EVENTS / MENUS / OPENING TIMES
VISIT BARLEYMOWBONSALL.CO.UK

MEET THE LOCAL ALIENS!
JOIN A FRIENDLY ATMOSPHERE
GREAT ATMOSPHERE
ACQUAINTANCE
EVERY SATURDAY NIGHT. LIVE BANDS AND
ENTERTAINMENT
QUALITY LOCALLY SOURCED FOOD
LARGE CHOICE OF HOME COOKED, HIGH
HOME COOKED FOOD
3 OR MORE LOCAL ALES ON TAP
LOCAL ALES

TO THE BARLEY MOW IN BONSA...
HERE'S WHY YOU SHOULD POP DOWN
NOW THAT WE HAVE YOUR FULL ATTENTION,
01629 825685

Barley Mow

RATED 5/5 ON TRIPADVISOR
IN AND AROUND DERBYSHIRE
★★★★★

High quality local builders.
Architect approved.
Fully qualified.
30 years experience.
If it is a new build, extension,
restoration or repair .
Contact **RICHARD WEBSTER**
on
Mob 07812 348283



THE VILLAGE GREEN

Photo by Elaine Pickersgill



Photo by Elaine Pickersgill

Gorgeous Fritillaries

Early showing for the efforts of the Wilder Bonsall team at Nether Green

Elaine Pickersgill



The Big Village Clean Up

Sunday 19 May
11am to 1pm

Bonsall Open Gardens and Wilder Bonsall have teamed up to encourage everyone to muck in and give our beautiful village a bit of a makeover before the Open Gardens weekend.

The aim is to cut back brambles and nettles etc. where these are obstructing pathways and verges, and litter picking across the village. Our volunteers will be at the fountain from 11am with maps/directions and waste bags. Or use your own compostable green waste bags. Return your bags to the park at the end of the day for collection by DDDC.

Please bring your own tools – sturdy gloves, long handled loppers, secateurs and shears will all be useful.

PLEASE DO NOT put your own garden waste in these bags, or soil dug from the verges/road - this is hazardous waste and must be dealt with separately to the green waste: We cannot take this.

PLEASE NOTE: All children must be supervised and please think about safety. Open Gardens/Wilder Bonsall are not responsible for any accidents or injury caused.

Elaine Pickersgill

On behalf of Wilder Bonsall

1a Yeoman Street, Bonsall
DE4 2AA

Phone: 01629 824814

E mail: enquiries@thefountainstore.co.uk



**The Fountain
Store**

Opening hours:
TUES-SAT 8.30-4

General groceries, fresh milk, bread, fruit and veg (also to pre-order). Wines and beers, traditional jar sweets

Remember: Refill, re-use, re-cycle! Bring your bottles and bags to re-use!

Parish Council Report for meeting on 16 April 2024

Defibrillators: Costs The Council considered the extra cost to the insurance premium of covering the defibrillators (approx. £115pa). It was decided to cover this cost. R Taylor confirmed he will continue with his fundraising efforts to contribute to on-going costs. All defibrillators to be added to BPC Asset List. Nether Green location - Cllr Grover reported that some residents did not like the prominent location of the new defibrillator. R Taylor explained that other locations had all been considered in the area and were not suitable. He explained that the defibrillator must not only be prominently displayed, but must be accessible for people with disabilities or visual impairment. It has been put by the planters and seats which are already there. He reported widespread support from residents and pointed out that while this is indeed a conservation area, the defibrillator is there to conserve life. Cllr Barry mentioned the possibility of putting a cover of some kind on the defibrillator and Cllrs will look into this. Clerk to upload map for defibrillators to website.

Chair recorded the sincere thanks and congratulations to R Taylor for all he and his team have achieved in providing defibrillators.

Quarrying update: Cllr Grover reported that a reply has been received concerning planning status at Ball Eye. The old permissions have to be

reviewed and this will be a lengthy process. BPC to ask whether local bodies will take part in the consultation process. Cllr Grover to draft message for Clerk to send. There have been no recent complaints about blasting.

Website: The Clerk reported that she is getting to know her way around the new site. She was asked to create a new page for general letters which residents may wish to see (e.g. from the MP, or concerning quarrying). Also, names of councillors need updating and photos added. Clerk to contact Parish On-line about these issues and to ask if traffic to the site can be monitored. Clerk to liaise with Mutterings team to ensure editions are uploaded to the new site. Payments to current provider will be stopped from 1st May. Clerk reported the new website is not easy to use. Cllrs discussed need to advertise the new website to residents. (address is bonsall-pc.gov.uk).

Local Project Fund: Clerk to apply to Cllr Buckler for grant of £500 for new bench in the park.

Yeoman St community garden: Open Gardens has kindly reserved money for planting and for re-structuring of the stonework. Clerk reported that unfortunately, as the structure of the garden (walls etc) is owned by DDDC while Bonsall is responsible for the plants through a SLA, it would not be advisable to change this structure. Cllrs agreed that BPC should not seek to take ownership of the site as it would be impracticable to take on responsibility for the retaining wall etc. Clerk to thank Open Gardens for any contribution towards plants.

Cars in vehicle park: Cllr J Smith had reported a car parked in the entrance to the park (from Yeoman St) which blocked access. Clerk to purchase a No Parking sign to be attached to the wall.

Two cars reported in the vehicle park which do not have tax/MOT. Clerk was instructed to report them to DDDC as abandoned vehicles, and to put notices on the cars informing the owners this has been done and the cars need to be moved.

Churchyard signage: Unfortunately, the signs asking people to keep their dogs on leads had fallen apart leaving what looked like crosses with the scruffy signs on. This had led to complaints from church-goers. Clerk was instructed to buy proper signs. Cllr S Smith will position these appropriately. Cllr Barry, who had kindly made the signs, apologised for the inadvertent offence caused.

The Cross: Cllr Grover reported he is in contact with Derbyshire Historic Buildings with a view to getting an architectural survey of work needed and further quotes.

Employer Liability insurance: In order to ensure B Allsopp is correctly covered by BPC insurance, clerk will ask her to identify products used and also to invoice separately for labour and materials.

Lengthsman vacancy: Chair reported that 5 people had expressed an interest and 4 had confirmed they would like to apply. Clerk to prepare schedule of footpaths with P Spencer to show required work. It was agreed P Spencer should be asked to contribute his opinion as he has done this job for such a long time and



Andy & Sam welcome you to the
Kings Head
We are open Mon - Sat 4-11pm &
Sun 12-11pm
serving food Mon - Sat 4-8pm &
Sun 12- 3pm (Sunday lunches) &
5-8 pm the normal menu
Call 01629 259729 to book

Townhead Farmhouse+ B&B

Comfortable ensuite rooms,
wonderful breakfast from the
AGA & a log fire for those chilly
evenings.

Self catering also available.
Special offers available for
longer stays.
Telephone: 01629 823762
townheadfarmhouse@btinternet.com
www.townheadfarmhouse.co.uk

Cal Robinson

Building Works

- Building
- Roofing
- Windows
- Doors
- Fascia-Guttering
- Kitchen Fitting
- Skirting-Architrave
- Internal Doors etc.

Tel: 01629 258107
07867 510551

Email: cal_robbo1@hotmail.co.uk

PARISH COUNCIL

with such dedication. Cllr Grover and Cllr J Smith will arrange interviews with the 4 applicants in the next two weeks.

Expenditure: Clerk had been asked to suggest expenditure cuts. She reported there was nothing obvious to cut and suggested increasing income. Clerk suggested asking DDDC to forward to BPC full amount set aside to cover legal costs due for tenancy agreement with owner of the building. Clerk to investigate costs of drawing up tenancy agreements with local solicitor firm. Clerk suggested increasing suggested parking cost and this was agreed. Clerk to look at amending notice in vehicle park to request £2/vehicle. The grant to Mutterings was discussed and it was agreed this need to be maintained. Cross repair to be paid for by grants and fundraising.

Full details of the meetings can be found in the minutes on the Parish Council page of the village website at www.bonsallvillage.org/ or on the village noticeboards.

The next Parish Council Meeting will take place on Thursday 9 May at 7.30pm in the Village Hall, preceded by the Annual Parish Meeting at 7.00pm. If you have any issues to be raised at the meeting, please contact the clerk Julia Milverton with details by 2 May.

Parish Councillors

If you have any concerns or requests of the Parish Council, they should ideally be raised in Public Participation section of the monthly meeting. If however there is an urgent matter, while individual councillors will try to assist, a direct response is better achieved by contacting the Clerk to the Parish Council directly:

Chair: Cllr Mark Harris, Stepping Lodge, Bell Lane, T: 820285
sandraandmarkharris@btinternet.com

Vice-Chair: Richard Grover
Nethergreen House, Clatterway
T: 01629 259558
richard_grover99@hotmail.com

Councillors:

Cllr Jon Barry, Ivy Cottage, Bell Lane,
T: 07866 750636
barryjonathan375@gmail.com

Cllr Linda Cauldwell
T: 01629 823790
asuslincau@gmail.com

Cllr Jackie Smith, 49 Church Street,
T: 07771 764366 jaqsm@aol.com

Cllr Stephen Smith, 49 Church Street. T: 07545 062413
ss@sjstechnical.com

Clerk and Finance Officer:

Julia Milverton,
69 Yeoman Street. T: 07306 311451;
bonsallclerk@gmail.com

District Councillors, Masson Ward:



Matthew Buckler
District Councillor,
Bonsall & Winster Ward
Tel: 01629 580926 Mobile:
07717 336186
Email: matthew.buckler@derbyshiredales.gov.uk



Dermot Murphy
County Councillor
Wirksworth Ward
Tel: 01629 580926
Mobile: 07583 111239
Email: dermot.murphy@derbyshire.gov.uk



Need help or advice?

Sarah Dines
Member of Parliament for
Derbyshire Dales

You can write at any time to:

Sarah Dines MP, House of Commons
London, SW1A 0AA

Phone: 020 7219 6660

Email:

Sarah.dines.mp@parliament.uk

Website: www.sarahdines.org.uk

**Sarah Dines MP, working hard for
Derbyshire Dales**

2013 Highly Commended
Retail Excellence

NATIONAL AWARD WINNERS
T. NUTT & SONS LTD
CARPET CENTRE
A FAMILY BUSINESS SINCE 1869

2011 Runner-Up
Best Small Family Business

VISIT OUR FOUR LARGE SHOWROOMS
Customers Own Car Park or RING FOR
FREE HOME SELECTION SERVICE
We Specialise In

Supply & Install of all Domestic & Contract Carpets
Supply & Install of all Domestic & Contract Vinyls
Supply & Install of RealWood & Laminate Floorings
Supply & Install of Karndean Floorings
Supply & Install of Sisal & Natural Floorings
Supply & Install Coretec and Quick-Step Flooring

Which?
Trusted trader

Certificate of Distinction
Oct 2019

CELEBRATING 153 YEARS OF OUR FAMILY BUSINESS

We Offer

- Guaranteed Workmanship
(Following British Standard 5325 And TSI Approved Code of Practice)
- Free Installation Service
- Free Estimating & Measuring
- Free Disposal of Old Carpet & Floorings
- Free Moving & Replacement of Furniture
- Trimming of Doors
- Insurance Work Undertaken & Free Insurance Quotes

APPROVED CODE
The British Standard 5325:2009

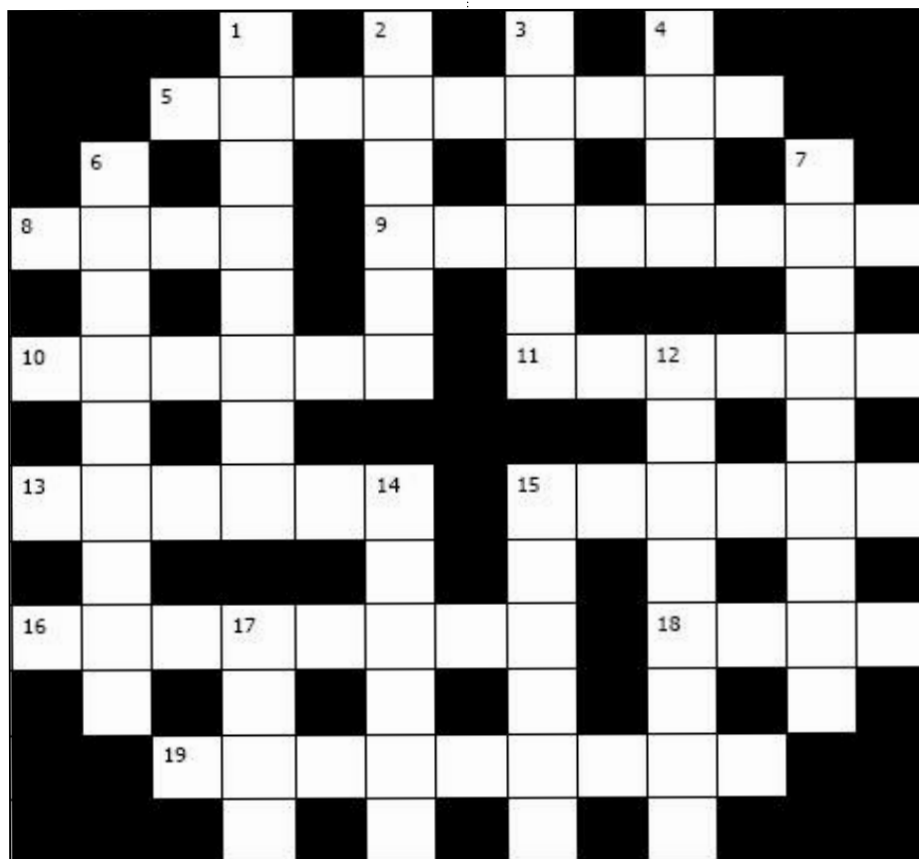
FG

TRUSTED TRADER
REGISTERED SPECIALIST

43/47 High Street, Clay Cross, Chesterfield S45 9DX
Tel: 01246 863148 • See our WEBSITE at www.nutt.co.uk

Opening times:
Monday, Tuesday, Thursday & Friday 9am to 5pm
Wednesday 9am to 12pm & Saturday 9am to 4pm

CROSSWORD #160



The themed question for number 10 across always refers to the second word.

Across:

- 5. Fiat perhaps? A Transit, perhaps? um..... No, I need to sleep in my vehicle. (9)
- 8. 19 seen inside. Who's paying? (4)
- 9. 19 spotted skeleton. (8)
- 10. Ramshackle tram is working - with 19? (6)
- 11. Brownie, turn back! No toilet here! (6)
- 13. 19. Jelly eaten by wobbly king? No, the reverse. (6)
- 15. Set fire to brown coal - fails to start. (6)
- 16. Sounds as though wee Simon snogged Mystic Meg, perhaps! (8)
- 18. Setter is a leading Methodist preacher. (4)
- 19. TV series - how? Yes! (6,3)


Down:

- 1. Stupid wally welcomes the old queen in a silky manner. (8)
- 2. Slippery snow at 19. (6)
- 3. Overhear insect? (6)
- 4. Turn down type of 19 with love. (4)
- 6. Keeps, say, a mobile bar. (9)
- 7. 19 who stuffs marrow in backside with extreme relish! (9)
- 12. Tea party with bread and fruit on outskirts of Hobart. (8)
- 14. Upset Clara Bow, perhaps. (2,4)
- 15. 19 - a popular bird! (6)
- 17. 19. Company is OK. (4)

Answers to Crossword No. 159

Across: 5. Heterodox. 8. See 4 down. 9. Dressage. 10. Allure. 11. Stamen. 13. Coitus. 15. Flog It. 16. Eschalot. 18. Abut. 19. Acquiesce.

Down: 1. Tear Duct. 2. Peddle. 3. Lovers. 4, 8 & 15 down. How's Your Father. 6. Coal House. 7. Egregious. 12. Amorance. 14. Sell Up. 17. Hock.



STEVE'S ELECTRICAL

DOMESTIC • COMMERCIAL • INDUSTRIAL

Fully qualified Electrician & Contractor with over 20 years of experience in domestic, commercial & industrial installations.

SPECIALISING IN:

- Full & partial rewires
- Extra lights & sockets
- Fuse board upgrades
- Outside sockets
- Outside lighting projects
- Down light installations
- Inspection, testing & certification
- PAT testing
- LED lighting
- New builds
- Kitchen & bathroom installations
- Fault Finding

Local, friendly & reliable service. No job too big or too small. Please phone or email for a free quote.

STEVEN BAKER
 Tel No: **07746 436 878**
 Email: **steveselectrical2@gmail.com**
34 Morrell Wood Drive, Belper, Derbyshire DE56 0JD
 4 Rose Cottages, Uppertown, Bonsall, Matlock, Derbyshire DE4 2AW

Auto Engineering

18 Yeoman Street



Service and MOT Preparation
All Makes of Vehicle

We Now Repair and Sell Tyres

Tel: 824537/822708

denise.pountain@hotmail.co.uk

CLASSIFIED ADS

Picture Framing

Market Place, Wirksworth. Complete bespoke service, you name it we frame it, over 100 different mouldings in stock, very competitively priced. Mon to Sat open 10 to 5; closed on Weds. Tel 824994

Window Cleaning

Pure water reach and wash pole service for residential or commercial properties. Ladder cleaning, gutter clearing, fascias, conservatory roofs, house cleaning and car washing. Tel: Andrew on 07598 170311 or 07746 320175 or email: andrewhallcleaning@gmail.com.

Playgroup

Cromford Playgroup welcomes funded and unfunded children from 2 years+. Ofsted registered and based in Cromford Methodist Community Hall. Call Karen for more details on 07905 937371.

Childminder

I am an Ofsted registered childminder based in Slaley, and will have a vacancy on Thursdays from the beginning of November. Funded sessions are available. I will have more spaces available from Summer 2024.

Please feel free to call for a chat or to arrange a visit.

Tel: Emma on 07464 966035

GCSE Revision Lessons

As a recently retired Maths teacher living in Bonsall, I am happy to provide free GCSE revision lessons to local students. References are available from the Maths Dept at Gell, if required. Call Lyn on 07976 898133

FOR SALE

Free to collect. Sony Bravia 40X3500 40" widescreen TV with 1080HD screen, purchased 2008 but still in good working order. Overall dimensions 48" wide (glass frame surround) x 28" tall x 5" deep with a base stand of 13" deep. It is also quite heavy! Contact Ricky Moss on 01629 826557.

EDITORIAL GROUP

Hazel Baldwin 824724

Brett Biedscheid 07977 200354

Maggie Duggins 825228

Karen Firth 259483

Julie Hamilton 824819

Ruth Headon 07769 725022

Dave Hicklin 820884

Pam McInally 826306

Ricky & Jeanette Moss 826557

Graham Partridge

Please send us your news, views, stories and diary events by
Noon on Wednesday 22nd
May to: Editorial Group, 91
Yeoman Street, or by e-mail to
mutterings@hotmail.com

EDITORIAL POLICY

We welcome news, views and letters on any topic provided they are attributed to an author. We review all items for obvious libellous or offensive material, but we cannot check for factual content.

Please do not send letters which are "not for publication". If you have strong feelings about what is or is not said in Mutterings, please either write to us or join the group of volunteers who enable the production of this village newsletter.

Back issues of T'Owd Man's Mutterings can be found on the Bonsall Village website – www.bonsallvillage.org. Please note that your articles will appear on the website and can be picked up by search engines.

Advertise your business in Mutterings

The newsletter is delivered to every household in Bonsall Parish 11 times per year and read by over 1000 people. In addition, the full-colour website version is searchable for company names and types of business. For a very reasonable £72 p.a., you can expand your business, as Steven Baker has found: "Since I started my advert in Mutterings I've had several jobs where customers have used it to find my number."

Please contact Julie Hamilton on 824819 for more information.



Cromford Garage

MOT, Service and
Repairs to all makes
of vehicles

Now selling &
repairing tyres

Book in on **01629 823043**
or **07885 879652**

LAVENDER GARDEN
Flowers
Gillian Blakeman

Via Gellia Mill, Via Gellia Rd, Bonsall, Matlock DE4 2AJ
T: 0786 6636707 or 0748 322 0690
E: info@lavendergardenflowers.co.uk
www.lavendergardenflowers.co.uk

VILLAGE GROUPS & RESOURCES

Allotment Group Penny Collier	825591
Art Club Fiona Drake	826294
Alan David	822983
Bonsall Barn Project	
Liz Stoppard / Mike Susko	823712
Bonsall Camp	
Matthew Quinn	07988 071682
Church Bell Ringers	
Melissa Wellbourne	826303
Church Flood Lighting Di Moor	824376
History Group Peter Greaves	822374
Carnival Committee	
Rob Stevenson	07854 447354
Chernobyl Childrens' Lifeline Group	
Chris Broome	824512
Cromford Playgroup	
Karen or Jayne	07905 937371
Horticultural Society	Vacant
Kick-boxing	
Hayley Capewell	07773 149935
Open Gardens Ollie Gerrish	824498
Pigeon Club Gordon Hardy	823549
PTFA Claire Duma	07880 851083
Riders Club Jane Williams	825632
School Head Rebecca Smart	822573
School Toddler Club Di Moor	824376
School Foundation	
Norma Rickards (Clerk)	822257
Senior Citizens Committee	Vacant
St James Rev Rod Prince	824707
Village Hall Committee	
Jackie Smith	823544
Village Life Church	
Pastor Matthew Quinn	07988 071682
Village Lunch Club Ron Addis	826309
Wesleyan Reform Chapel (The Dale)	
Judy Land	824223
Wilder Bonsall Group	
Deb Smith	825228

RESOURCES

Bonsall Publications

Bonsall - a village & its history

£15 paperback, £25 hardback

Bonsall within living memory

£10

80 Years of Bonsall Carnival Book

£10

History Walking Guides

Set of six £5

History booklets

see online shop

The Bonsall Map

see online shop

Available from Fountain Tearooms

More details on publications at the online shop www.bonsallhistory.org.uk

Village Hall

Cost per session

(a session is a morning, afternoon or evening):

- Village organisations:

£10 - one floor; £16 - both floors

- Non-village organisations:

£25 - one floor; £35 - both floors

- Village people private hire:

£30 - one floor; £40 - both floors

- Non-village people private hire:

£45 - one floor; £55 - both floors

For information on sale of alcohol/ private bar, use of the Village Hall audio equipment, screening a film, or any other matters, please contact Jackie Smith, 07771 764366. Jaqsm@aol.com

Thank you to everyone who continues to book the village hall, and provide such a variety of events within Bonsall. Our updated and more accessible village hall now has lift access.

TRAVEL SERVICES

Assisted Travel

Derbyshire Connect transport for shopping, weekdays 9am - 4pm, booked in advance.

Tel: 01335 300670 between two and seven days before travel or email: info@ashbournect.org.uk.

Derbyshire Connect Active Travel to healthcare appointments, weekdays 9am - 5pm, booked in advance. Charges vary. Tel: 03333 444125 at least 48 hours in advance or email: office@sdcs.org.uk

Bus services

216 Bus service - Matlock to Bonsall via Starkholmes Monday to Saturday. No service on Sunday or Bank Holiday.

Bonsall Uppertown 11.01, 13.01, 16.01, 18.01

The Fountain 11.06, 13.06, 16.06, 18.06
Matlock (by M&S) 10.36, 12.36, 15.36, 17.36.

(see www.stagecoachbus.com/timetables)

Taxis 822072, 813774, 826060, 07967 273237, 07815 773706

Train services 0845 7484950

Travel line 0870 6082608

Volunteer Drivers

Loreen 822067

Richard Shipley 259809

Defibrillator Trained Volunteers

Richard Taylor 823704, 07860 214503

Brett Taylor 824407, 07950 036657

Anne Young 07876 506595

Phil Addis 826309, 07951 189727

John Ratcliffe 07896 924824

Maxine Ellis 07742 749854

Julia Milverton 07584 895644

Jackie Smith 07771 764366

Melissa Wellbourn Hesp 07557 902500

Jill & David Rickards 824038, 07586 721963

Jason Pugh 07756 668205

Jennie Pugh 07841 758488

Alan Walker 07711 733509

Elaine Pickersgill 07832 383074

Adrian Rollinson 07768 346302

USEFUL NUMBERS

Health

NHS Direct 0300 311 22 33

Chemists: Wirksworth Market Place

822607; 12 Bank Road, Matlock, 57924

Dentists Matlock: 584746, 55645,

582218, 56558. Steeple Grange: 822172

Doctors: Wirksworth Hannage Brook

822434; Matlock Imperial Road 583465

Hospitals: Chesterfield, Calow 01246

277271; Derby City 01332 340131; Derby

Royal 01332 347141; Matlock Whitworth

580211.

Non-urgent advice 111

Derbyshire County Council

www.derbyshire.gov.uk

All enquiries 533190. Out of Hours

numbers: 532600 or 'Call Derbyshire'

533190 or 0845 6058058

Derbys Dales District Council

www.derbyshiredales.gov.uk

All enquiries 761100

Environmental health 761212

Tourist information

Matlock 583388

Matlock Bath 583834

Trading Standards 585858

Electricity emergencies 0800 0568090

Fire station, Matlock 582849

Gas leaks 0800 111999

Waste Recycling Centre

Harrison

Way, Darley Dale 8.30 am - 6.00 pm

daily.

Mobile Library

01629 533444

Monthly 2nd Fridays at the Fountain,

10.50 - 11.20 am

Police/Safer Neighbourhoods

101

PCSO's: Charles.Foster (Charles.Foster@

derbyshire.police.uk) covering Bonsall,

Cromford and Matlock Bath and Kirsty.

Hunt (Kirsty.Hunt@derbyshire.police.uk)

covering Wirksworth and Middleton.

[matlock.neighbourhoods@derbyshire.pnn.](mailto:matlock.neighbourhoods@derbyshire.pnn.police.uk)

police.uk.

Crimestoppers 0800 555111

Victim support 825544

Community safety 761101

Swimming

Matlock (Arc Leisure) 581322

Wirksworth 825704

Vets Matlock 582844, 581234

Wirksworth 823034



T'Owd Man's

Mutterings

Diary for May 2024

Date		Event	Venue
Fri	3	Grey Bins and Food Waste Caddy	
Tues	7	9.30 am - 12 noon - Bonsall Arts Group	Village Hall
Thur	9	7pm - Annual Parish Meeting	Village Hall
		7.30pm - Parish Council Meeting	
Sat	11	Blue & Green Bins and Food Waste Caddy	
Tues	14	9.30 am - 12 noon - Bonsall Arts Group	Village Hall
Wed	15	12.30pm - Village Lunch Club	Village Hall
Fri	17	Grey Bins and Food Waste Caddy	
Sun	19	10am - 4pm, Fundraiser Fete for Ukraine	Mount Cook Adventure Centre
		11am - 1pm, The Big Village Clean-up	Meet at The Fountain
Tues	21	9.30 am - 12 noon - Bonsall Arts Group	Village Hall
Fri	24	Blue & Green Bins and Food Waste Caddy	
		6.30pm, Heritage Walk	Bonsall Lorry Park
Tue	28	9.30 am - 12 noon, Bonsall Arts Group	Village Hall
Sat	1	Grey Bins and Food Waste Caddy	

Future dates

2 - 4 July 2024 Proposed closure of High Street for STW Pipe repair.

21 July 2024 'It's A Knockout' competition at 2pm