



Issue 194

July 2020

# T'Owd Man's Mutterings



“Bonsall,  
let's do this  
together”

Carla Vicencio Prior, Team Vicar, Wirksworth Team

Photo by Elisabeth Stoppard

Due to the ongoing lockdown, we are unable to publish and deliver Mutterings for July. There is also little taking place in the village, leading to a shorter newsletter. An on-line copy is available on the Bonsall Village website at [www.bonsallvillage.org](http://www.bonsallvillage.org). Please print a copy for any friends or neighbours who may not have internet access. The deadline for any news, views, stories, letters and diary events for the August edition is noon on Monday 22 July to [mutterings@hotmail.com](mailto:mutterings@hotmail.com). Editorial Group.



*In folklore T'Owd Man is a spirit that inhabits mines and caves. T'Owd Man of Bonsall is a carved figure of a miner that was taken to Wirksworth when St James church was being refurbished in the 1860s. It was said that strange noises coming from the old Ball Eye mine at the end of Church St. were of T'Owd Man muttering*



## July

### St James

We meet daily at 9am and 5pm for morning and evening prayer and on Sundays at 9:30am for a Eucharist. You can join us by using Zoom: Click on this link and follow instructions on your screen: <https://zoom.us/j/2732241372> If you don't have access to the internet, you can do so using a landline: A few minutes before the time of the service:

1. Call 0208 0806591
2. The recorded message will ask for a host or meeting number: Key in 2732241372#.
3. You are then asked another question. Key in #. Once connected you will be able to hear and contribute. You can leave a prayer at a prayer wall at <https://padlet.com/revcarla/h3g2wc6zlac>
4. You could make use of the Church of England prayer resources at [www.churchofengland.org/more/media-centre/coronavirus-liturgypandprayer-resources](http://www.churchofengland.org/more/media-centre/coronavirus-liturgypandprayer-resources).

Please don't forget that your Church still needs your financial support. If you would like details of how to give via direct debit please contact your Treasurer or Churchwarden. Further information from: <http://wirksworthteamministry.co.uk/eventsand-notices/>

**Canon David Truby** and  
**Revd Carla Vicêncio Prior**

### Village Life Church

We have decided to close the doors of the church for the short-term. We are still regularly making space for prayer and moving our pulpits online. If you need any help, support or encouragement at this time please do not hesitate to call me on 07988 071682. If you would like access to our online content or to join our Whatsapp community, please let me know and we would be very happy to add you. Many blessings and love to you all. **Pastor Matthew Quinn**

### Bonsall Wesleyan Reform Chapel (The Dale)

The Chapel is closed and there are no services taking place. Please check the Chapel noticeboard. **Judy Land**



## Lockdown contrasts, June 2020

When I wrote last, we were about to go into lockdown. Now we are seeing tentative steps of that lockdown easing. What have we learnt in these last very unusual weeks? What will we keep, what will we be glad is over?

One of the things that I learnt quite quickly was that lockdown was not the same for everyone. If you happen to live in beautiful Derbyshire and either have a garden or the ability to go out walking in amazing countryside on your doorstep, chances are you fared better than if you were stuck on the 13th floor of an apartment block in a big city, with young children stuck indoors 23 out of 24 hours. I learnt that if you were able to work from home or were furloughed, you didn't have to worry about where your next meal was coming from, not so if you were self-employed or lost your job in the lockdown.

I learnt that the virus does not discriminate but the society we've allowed to build around us does, so if you were old or poor or black or from any BAME background your chances of dying from Covid-19 were higher. Then, when the discrepancies in our systems were being blatantly revealed in our mortality rates, George Floyd is killed and the world erupts in protest and solidarity, giving voice to Black Lives Matter in a renewed way. This touches me personally, as a mother of a black young man, and it fills me with hope. Hope that we are awakening to our brothers and sisters' struggles around the world and rising up to fight for justice and change. I say fight it because inequality isn't inevitable, war isn't inevitable, pollution isn't inevitable, poverty isn't inevitable, lack of education isn't inevitable. All these things must be resisted.

The other thing that fills me with hope is the way our communities have come together to support one another during lock down. I love the fact that we started knocking on our neighbours' doors and supporting with food and medicine collections and general chats. And we looked to help those whom we may never meet, through donations to the food bank—a massive thank you for all of you who continue to support Jigsaw foodbank, through the church—they have seen an unprecedented increase in demand for their services—your generosity continues to save lives.

The community spirit, which was already strong in Bonsall, has been reinvigorated and I wouldn't want that to go after lockdown. The future is uncertain, and many will struggle as we find our way forward, but hope, solidarity and love for one another: locally, nationally and internationally, is what I would take from the last few difficult but revolutionary weeks.

Through it all the church also has gone through some amazing changes. We had to close our doors and move online and it's proved a success in many ways. We're looking forward to returning to meet one another in person, but the future will look different and I pray that we will be open to guidance from God and our community as to what it might look like. Keep talking Bonsall, let's do this together.

## A Blessing

Lord for those who hold us up when the pain is too strong to bear, we give you thanks. May your blessing be on them and on us. In the name of the Father, the Son and the Holy Spirit. Amen. Keep safe Bonsall. God bless you all.

**Carla Vicêncio Prior**

Team Vicar, Wirksworth Team  
MinistryMob: 07767087530,  
Email: [revcarla@talktalk.net](mailto:revcarla@talktalk.net)

## VILLAGE NOTICEBOARD

### COMMUNITY SUPPORT GROUP

If you would like to speak to us, or want to ask for help, please text or phone one of the Co-ordinators for your street and they will link you up with your nearest volunteer/s:

**The Dale, Study Drive,  
Puddle Hill –**  
Rachael Richardson 07873 674983

**Clatterway and Black Tor Road**  
– Liz Pritchett 07716 191030

**Yeoman Street –**  
Jackie Smith 07771 764366

**Pounder Lane and Town End**  
– Claire Duma 07880 851083

**Uppertown and Bankside –**  
Sandra Harris 07808 097375

**High Street –**  
Deborah Pearson 07902 792530

**Brightgate and Bonsall Moor –**  
Jill Wood 07917 205706

**Church Street and Ember Lane**  
– Claire Taylor 07989 597811

**Via Gellia–**  
Stuart and Donna Poplar 07889  
166888 and 07866013204

If you would like to offer support and join in, we can add you to our volunteer register.

Please text 07873 674 983 for **Rachael** or 7808 097375 for **Sandra** to join the group.

Let's work to prevent the spread of this disease.  
Take care everyone.

Photo by Caroline Kirkham



### The Cockerel is Safe!!

You may have noticed that during the last 2 weeks there have been workmen bravely climbing the tower and spire at the church. They have done a number of jobs during the 10 days they were there including mending lightning conductor, guttering, treating the louvers and some pointing. The most important thing however is that they have secured the Cockerel firmly in place so that it now spins freely with the wind (it didn't before) and although is slightly bent it is steady and won't damage the stone work. They thought that it actually wasn't ever properly installed in the first place. Our sincere thanks to everyone who donated money to enable the work. We can now, once more, walk safely below the cockerel without fear of it falling on our heads!

**Caroline Kirkham**

### Bonsall CE (VA) Primary School - Request for Volunteers

Bonsall CE (VA) Primary School is looking for volunteers to join the Governing Body. This is a successful school and we need people who have an area of expertise and who will support the School in its vision of 'Learning to Love for Life'.

If you feel you have the enthusiasm and interest to join our team, please contact Lesley at school: 01629 822573 or e-mail [headteacher@bonsall.derbyshire.sch.uk](mailto:headteacher@bonsall.derbyshire.sch.uk) or Ann Hambly: [amwhambly@yahoo.co.uk](mailto:amwhambly@yahoo.co.uk) to find out more.

Many thanks,

**Gill Wood**  
School Business Officer



# VILLAGE NOTICEBOARD

Photo by Brett Biedscheid



## Well Dressing 2020

Hello there to you all, while I have been away I have been thinking about how different July will be for the village this year... without the wonderful magic that is carnival and the week of activities. Well dressing may well prove difficult to do this year too, especially the large ones that rely on the time of many people from different households, indeed part of the pleasure of producing the wells is the meeting of friends and neighbours from within the community.

On the back of that I had an idea ...I wondered if anyone or a family might like to design a well of any shape, the bigger the better and display the design in their windows...celebrating Bonsall especially in this extraordinary year, telling your story of living in Bonsall during lockdown. The Wells would have been put up on Saturday 25 July for a week. It is just a thought as we have a lot to be thankful for, living where we do.

Wishing you all the best,

**Marion Heasman**

## Lesley Murhall - End of an Era

It is definitely the end of an era for Bonsall CE VA School. An era of twenty years when so much has been achieved because of the leadership of one Headteacher, Lesley Murhall.

Lesley's approach has been second to none and her vision and drive have ensured the pupils have all been given the opportunity to become prepared for life in an ever-changing world in the 21st Century. Her ethos of inclusion, participation, acceptance and understanding has allowed all pupils to benefit from their education and set themselves challenges which ensure success.

All who know the school well are fully aware of the time and effort that Lesley has devoted to every aspect of education. Time has never been an issue and those who live near to the school will be aware of the length of her day – that is if they are up before she arrives!

Staff and pupils have so many memories, from the very first camping experience on the school field to trips to London and to the queue of parents waiting to speak to the Ofsted Inspector to tell him how good the school was.

As one pupil recently wrote: "Bonsall CE Primary School is a great school. Everybody there is so kind and helpful. If someone doesn't have anyone to play with, I guarantee someone will definitely come and brighten their day."

The school, as Lesley retires, is rated by Ofsted as 'Good', with the recognition that in May 2019 there was no longer an 'Outstanding' grade so 'Good' was the highest, and the school was graded 'Outstanding' within the Diocesan Report in 2016 from the Statutory Inspection of Anglican and Methodist Schools (SIAMS). Achievements that, as governors, we are all proud of.

Bonsall has clearly benefitted in so many ways from Lesley's leadership. Links with the community; St. James' Church and all places of worship have ensured a strong community feeling. Lesley's approach has ensured that so many events are supported, from those linked with the Pensioners' Club, to the Carnival, to Open Gardens, to the lunches for the Community, and so many more. Entertainment from the pupils has been enjoyed by so many.

We are all so sorry that the days since March 23rd have been so different to the days that were planned at the beginning of the academic year. So much has not happened. Yet, selfishly, we are all so grateful that Lesley, with her wealth of experience, was at the helm to respond to all of the demands of COVID-19.

Thank you, Lesley, for such an incredible twenty years.

**Ann Hambly**

on behalf of Staff and Governors  
at Bonsall CE VA School



## VILLAGE NOTICEBOARD

Photos by Pete Fellows



## **Stones around the Cross**

Congratulations to our village  
stone-painters - they look wonderful!

## Pete Fellows

**Derbyshire  
County Council  
Community News**

The Council produce a fortnightly newsletter giving information for local groups, societies, clubs, parish and town councils. This issue includes information on recycling centres.

If you want more information then email the council at [news@derbyshire.gov.uk](mailto:news@derbyshire.gov.uk).

DERBYSHIRE  
County Council

# Community News

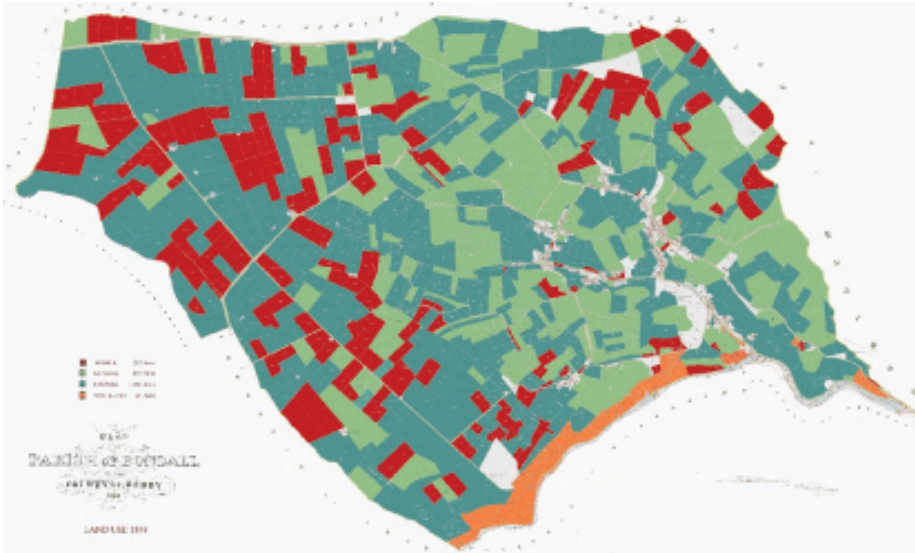
Information for local groups, societies, clubs, parish and town councils  
17 June 2020

---

Be a safe shopper



# VILLAGE NOTICEBOARD



## Parish Boundary Survey

Peter Greaves describes the findings of a recent study in the first of four articles.

### Part 1: Background, history and the boundary from Cromford to Ember Farm

**The study was completed as part of the Council for British Archaeology East Midlands' Parish Boundaries Project to map the parish boundaries and identify features of archaeological and historic interest. The results will be added to a database that will build up over time and will eventually cover the whole of the East Midlands.**

**Ancient boundaries are marked by walls, ditches, banks, hedges and trees but, at present, there is no systematic record of these individual elements. In late 2017, the Bonsall History Group undertook to coordinate volunteers to walk the boundaries with historic maps and record the form and condition of these elements. These will form a 21st Century 'Domesday' record, linked to photographs. We realised that public rights of way would largely give access to the boundary, so it was not necessary to contact the landowners to seek permission to walk the boundaries.**

### History

The royal manors of north Derbyshire, held by Edward the Confessor and retained by William the Conqueror, were Hope, Ashford, Bakewell, Darley, Matlock, Wirksworth, Parwich and Ashbourne. These manors were not just the villages, or even the parishes, represented by these names, but were far more extensive, with scattered, but dependent, settlements. Ible, Wensley, Snitterton and Bonsall were named in the Domesday Book as, inter alia, berewicks of the manor of Metesforde which is identified with Matlock. This manor had no church but looked to Wirksworth minster. Wirksworth manor had berewicks of Cromford, and Middleton.

In 1086, the adjoining parishes of Winster and Ivenbrook were held by Henry de Ferrers and had previously been held by Saxon thanes; Leofing and Raven (Winster) and Ketel (Ivenbrook). Bonsall parish has a boundary with Winster, Wensley (part of Wensley and Snitterton parish known since 1934 as South Darley), Matlock, Matlock Bath (carved out of Matlock parish ecclesiastically in 1842 and administratively with its own Local Board from 1865), Cromford, Middleton-by-Wirksworth (carved out of Wirksworth parish), Ible and Ivenbrook Grange. The latter two were regarded as townships in the Wirksworth parish.

Thus Bonsall's boundary was internal to the royal manor of Metesford, or the boundary between two royal manors, Matlock and Wirksworth, or with two parishes (Winster and Ivenbrook) formerly held by thanes. The boundary between the two royal manors is the Iven Brook and Bonsall Brook flowing down the Via Gellia from west to

east and is the southern boundary of the Parish with Middleton-by-Wirksworth and Cromford. The east and most of the northern boundary is within the Metesforde boundary. Part of the northern boundary and half the western boundary is with former non-Royal manors and the balance of the western boundary is with a Metesforde berewick (Ible).

### Chronology of the administrative boundary

Bonsall contained two manors within the ecclesiastical parish. They became part of the Duchy of Lancaster when it was created in 1266 when the de Ferrers estates were forfeited to the Duchy. In 1399, they reverted to the Crown, and were administered as such, until the sale by Charles 1 in 1628 to a favoured courtier, Henry Carey, formerly Viscount Rocheford, who became Earl of Dover in that year. He sold the manor in 1630 to the copyholders who continued to operate the manorial rights and administration of the Court Leet and Court Baron through Trustees. He was also a partner in Dovegang lead mines from 1628/9 until dispossessed in 1631. The Mining Liberty boundary followed the ecclesiastical boundary.

As part of the early statutory attempts to relieve poverty, in 1834 Bonsall parish was included in grouping of parishes with use of the Brassington workhouse, but after only ten years this was reorganised into the Ashbourne Poor Law Union. In 1865 it was permitted its own Local Board and in 1894 it became an Urban District. In 1935 it became a ward of the Matlock Urban District Council and in 1974 the ward was merged with Cromford and Matlock Bath as Masson ward with two councillors on the West Derbyshire District Council, later (1979) renamed as Derbyshire Dales District Council. At this time, a Parish Council was formed. Throughout these administrative changes the Bonsall parish and manor boundary remained unchanged. The area of the parish is just over 980 Hectares (2,424 acres) and the population, which peaked in 1841 at 1496, and is now about 800.

### Context

Settlements were generally along the river valleys, with little settlement over 250m (820 feet), unless related to a water supply. However, the majority of the boundary, and indeed the parish, are above 250m. The map shows

## VILLAGE NOTICEBOARD

land use in 1848: red - arable, light green - meadow, dark green - pasture, brown - woodland, white - non-agricultural use, with the village to the south east of the parish (from the Tithe apportionment records). The 64 Ha (160 acres) of arable land is surprising, given that the elevation is over 305m (1000 feet) for most of the plots. Perhaps it is a reflection that the Corn Laws, which had supported arable production, had been repealed only two years earlier (1846). Nearly all the land is now pasture (grazed all year) or meadow (preserved during spring for a hay or silage crop, taken in early summer, before being grazed in the autumn and winter).

## The boundary from Cromford to Ember Farm

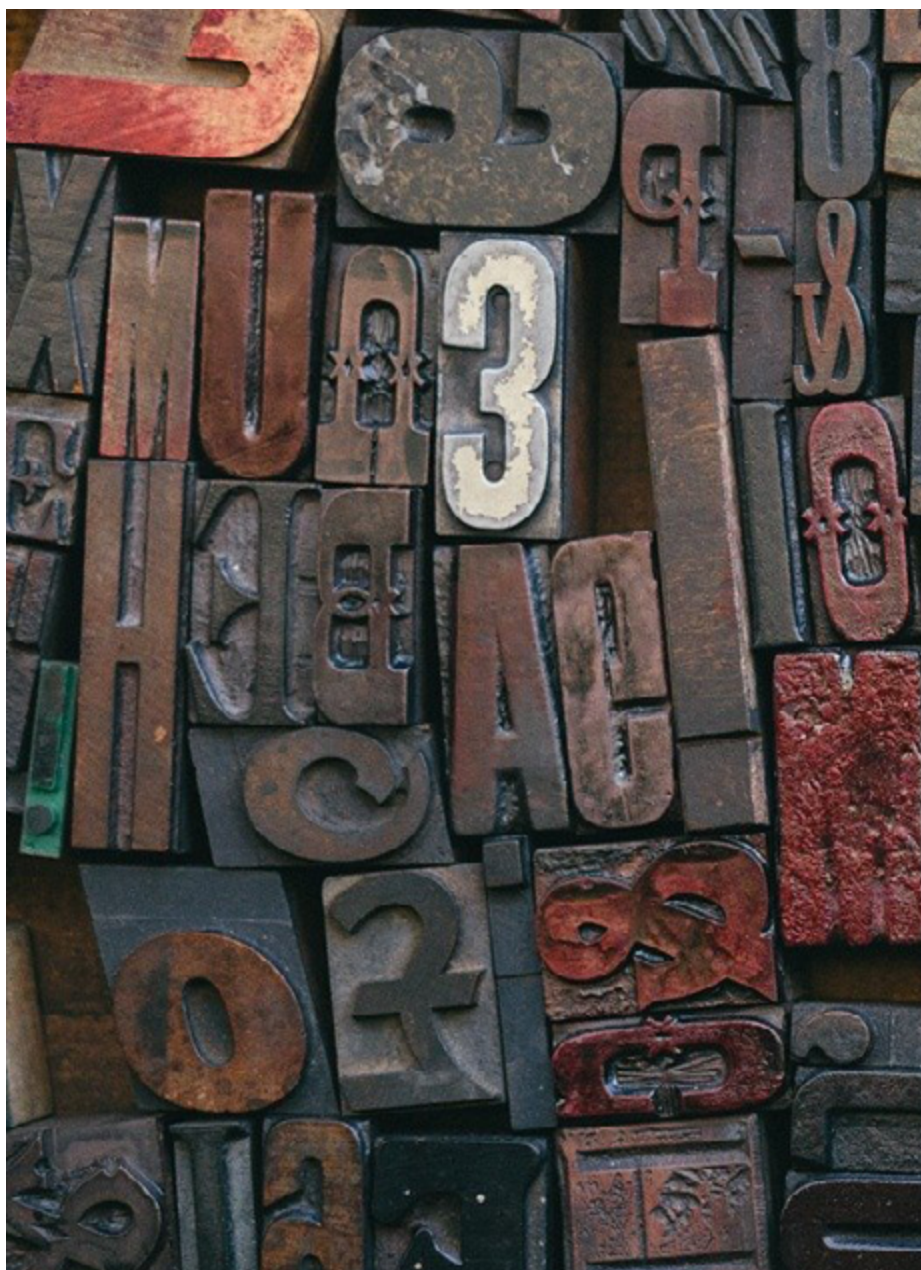
Walking anti-clockwise from the south eastern extremity in Cromford, the boundary turns north west from the Via Gellia, up Chapel Hill and heads through woodland towards some crags to the north.

A footpath to Matlock Bath is passed on the north side. The boundary separates from the path on its north side. The footpath route has been disrupted by quarrying and the boundary cuts across the slope on the line of a shallow ditch. It resumes its joint route with the path after 100m (200m on the path). The path then turns north, rising to just inside the ridge line to the east. The fields are known as Monks Wall and the path from Bonsall to Upperwood is crossed.

There is some evidence of a ditch on the boundary, east of the path, in a hawthorn hedge line containing ash trees and some intermittent evidence of a drystone wall (this feature could be where the ground level has been worn down by passage of pedestrian and animal traffic; i.e. an incipient holloway). The boundary from the north west corner of the field is a drystone wall from here to the fields below Ember farm. The field boundaries on the Bonsall side are characteristic of medieval pasture with a funnelling effect for controlling livestock.

The Bonsall-Matlock Bath footpath is crossed at Ember farm and the boundary follows a public footpath between the farm buildings.

## Peter Greaves



## Words that haven't become obsolete

There are many words that were used for hundreds of years, which we don't recognise today. For whatever reason, we stopped using them and they became obsolete. But there are some old words that we still recognise because they got stuck in phrases that have lasted through the centuries. Here are 12 that have survived:

**1. Wend.**

You rarely see a 'wend' without a 'way'. You can wend your way through a crowd, but no-one wends to bed or to school. However, there was a time when people would wend to all kinds of places – it was another word for 'go' in Old English. The past tense of wend was 'went' and the past tense of go was 'gaed'. People used both until the 15th century, when go became the preferred verb, except in the past tense where went hung on.

## 2. Deserts.

The desert in 'just deserts' is not the dry sandy kind. It comes from an Old French word for 'deserve', and it was used in English from the 13th century to mean 'that which is deserved'. When you get your just deserts, you get your due.



# VILLAGE NOTICEBOARD

## 3. Eke.

If we see 'eke' at all, it's when we 'eke out' a living, but it comes from an old verb meaning to add, supplement, or grow. It's the same word that gave us 'eke-name' for 'additional name', which later became 'nickname'.

## 4. Sleight.

Sleight of hand' is often miswritten as 'slight' and for good reason. Not only does the expression convey an image of light, nimble fingers, which fits well with the smallness implied by 'slight', but an alternate expression for the concept is 'legerdemain', from the French 'léger de main', literally, 'light of hand'. Sleight is a Middle English word meaning 'cunning' or 'trickery'.

## 5. Dint.

This comes from the oldest of Old English, where it originally referred to a blow struck with a sword. It came to stand for the whole idea of subduing by force, and is now fossilised in our expression 'by dint of ...', referring to your hard work, or anything you can use to accomplish something.

## 6. Roughshod.

This is still used in the expression 'to ride roughshod' over somebody or something, meaning to tyrannise or treat harshly. It came about in the 17th century, where a 'rough-shod' horse had shoes with protruding nail heads to get a better grip on slippery roads. It was great for keeping the horse on its feet, but not so great for anyone the horse might step on.

## 7. Fro.

The fro in 'to and fro' is a remnant of a northern English or Scottish way of pronouncing 'from'. It was also part of other expressions that have been lost, like 'fro and till', 'to do fro' (to remove), and 'of or fro' (for or against).

## 8. Hue.

The hue of 'hue and cry', the noisy clamour of a crowd, is not the same as the term for colour (the colour one comes from the Old English word 'híew', for 'appearance'). This hue comes from the Old French 'hu' or 'heu', which was basically onomatopoeic, like 'hoot'.

## 9. Kith.

The kith part of 'kith and kin' came from an Old English word referring to knowledge or acquaintance. It also stood for native land or country, the place that you were most familiar with. 'Kith and kin' originally meant your country and your family, but later came to have the wider sense of friends and family.

## 10. Lurch.

When you leave someone 'in the lurch', you leave them in a difficult position. The lurch in this expression comes from an old French backgammon-style game called 'lourche'. Lurch became a general term for beating your opponent by a huge score. By extension, it came to stand for getting the better of someone or cheating them.

## 11. Umbrage.

This comes from the Old French 'ombrage' (shade or shadow) and it was once used to mean the actual shade from the sun. Then it took on various meanings to do with doubt and suspicion, or the giving and taking of offence. To give umbrage was to offend someone, or to 'throw shade'. Today, it is more likely that someone is taking, rather than giving it.

## 12. Shrift.

We might not know what a shrift is anymore, but we know we don't want to get a short one. Shrift was a word for a confession, or a penance imposed by a priest, something we would want to keep short. But the phrase 'short shrift' came from the practice of allowing time for the condemned to make a confession before being executed. So in that context, shorter was not better.

**(From Arika Okrent, a linguist and author of 'In the Land of Invented Languages')**

spotted by Wendy Bullar



## Bin Collections in July

### Tues 7 July -

Grey Bins and Food Waste Caddy

### Tues 14 July -

Blue & Green Bins and Food Waste Caddy

### Tues 21 July -

Grey Bins and Food Waste Caddy

### Tues 28 July -

Blue & Green Bins and Food Waste Caddy

Mum is down sizing..  
Would you like a 70's Meredew teak veneer, double wardrobe?  
It comes in two parts to go up narrow stairs.



Or, would you like to relax in a (manually operated) reclining chair?



Both in reasonable condition. Make her a reasonable offer on 825267



## Parish Council Report for meeting on 16 June 2020



### Motocross at former White Low mine

Nineteen members of the public joined the audio-video link meeting to hear Julian Hawley ('JH') for the Peak District National Park Authority ('PDNPA') answer questions about what the PDNPA are doing, or to register their concerns at current activity. Mr Hawley addressed the following questions:

#### Does the site have a certificate of lawful use?

No there is no certificate in place. But that does not mean that the activity is unlawful; it depends on the history of use of the site.

#### Does the site have a change of use agreed for a business?

No, but the fact that it is a business is not directly relevant, it is the character of the use that is important.

#### Is there permission for a cafe on the site?

There is no permission for a building. A container on the site being used in 2018 as a cafe was removed at PDNPA request but a caravan and temporary toilets now on site do not need planning permission at present.

#### Has the PDNPA considered taking enforcement action in relation to the engineering and earthworks in 2017?

Yes this has been considered, but this is not thought to be the best way forward as there are technical problems with that approach and it is

the use of the land not the engineering works that is causing the problem.

#### What opening hours have PDNPA agreed?

There are no restrictions on hours because there is no planning permission in place and so no conditions governing opening hours to enforce. Last year PDNPA advised the landowner to cut back use to 3 days a week (which is what PDNPA observed that it was in 2010). Prior to lockdown this had been complied with; since lockdown that is no longer being followed and it had been open most days.

#### Has there been ground testing for contamination?

The land was worked for fluorspar in the 70s and 80s; no testing has been done by PDNPA but this and the question of dust and lead contamination are for the District Council Environmental Health team. (A resident said that a dust sample had been tested recently from an adjacent field and the results showed very high lead levels; the report had been sent to Environmental Health).

#### Next Steps; enforcement action:

JH said that the PDNPA had taken legal advice, gathered a lot of evidence, and now would be recommending enforcement action to stop motocross on the land. He acknowledged that there were competing interests; the PDNPA had received emails of support from local

businesses, and some complainants have said that they don't want the track to go completely but to remain as it was for local people. But he said PDNPA have had a lot of complaints recently which they feel are genuine and are justified, and they feel that this now needs to be brought to a close and enforcement action should be taken. PDNPA expect that notice to be appealed. Mr Hawley confirmed that PDNPA would be likely to be requesting all activity to be stopped as there were difficulties in specifying a lower level of lawful use.

#### Timescale:

JH said that enforcement action was likely to be taken in the next 28 days.

#### Resident's complaints:

several residents from Slaley and Bonsall spoke about the problems caused since the track has been open every day- recent efforts to direct traffic have been intermittent and many residents are concerned about noise, and also about contaminated dust causing risk to walkers, cyclists and the users of the tracks themselves. There was concern that there could be up to 60 bikes a day on the track, and also that works that had raised the track had exacerbated the noise impact.

Residents who had lived in the village for 35 years said that it was only recently that bikes had been a problem – now when they open their door it is to a 'wall of noise'. It is not just the site but the degradation of the site around it. JH said that evident of past use would be relevant at an appeal. Concerns were also expressed about noise from larger bikes that are now being used on the site.

Bonsall Moor Action Group ([info@bonsallmooractiongroup.co.uk](mailto:info@bonsallmooractiongroup.co.uk)): a resident said that this group had just been established and would be open to receiving complaints to pass onto the authorities, and to report information back. JH and the Parish Council encouraged use of the group to channel information.

Noise complaints to the District Council Environmental Health team: the Chair advised those with complaints about noise nuisance to contact the District Council Environmental Health team (Laura Salmon was the officer dealing with this). Cllr Purdy said that he would support this work. It was reported that the EHO was planning to visit the site to take noise level readings in the near future.



## Parish Councillors

If you have any concerns or requests of the Parish Council, they should ideally be raised in Public Participation section of the monthly meeting. If however there is an urgent matter, while individual councillors will try to assist, a direct response is better achieved by contacting the Clerk to the Parish Council directly:

**Chair: Cllr Mark Harris**, Stepping Lodge, Bell Lane, T: 820285  
sandraandmarkharris@btinternet.com

**Vice-Chair: Phil Addis**  
Dale House, The Dale. T 826309  
philaddis0@gmail.com

## Councillors:

**Cllr Denise Pountain**  
6 High Street. T: 822708  
denise.pountain@hotmail.co.uk

**Cllr Jon Barry**, Ivy Cottage, Bell Lane,  
T: 07866 750636  
jon.barry@derby-college.ac.uk

**Cllr Richard Grover**  
Nethergreen House, Clatterway  
T: 01629 259558  
richard\_grover99@hotmail.com

**Cllr Jackie Smith**, 55 Yeoman Street,  
T: 823544, Mob 07771 764366  
jaqsm@aol.com

**Cllr Stephen Smith**, 55 Yeoman Street.  
T 823544, Mob 07545 062413  
ss@sjstechnical.com

## Clerk and Finance Officer:

**Tony Payne**,  
27 High Street. T: 822311;  
Mob. 07941358183;  
bonsallclerk@gmail.com



## Coronavirus

Cllr Purdy said that the District Council were working with the County Council to open shopping streets such as Bakewell market, and with local industry and business to reactivate the local economy. He said that local Covid 19 levels were relatively low but cautioned against the risk of a second wave and the need to maintain social distancing as much as possible.

## Slinter Top Quarry update

A noise impact report on Bonsall has been prepared by the quarry company and is out for consultation. The report will be looked at in detail at the next meeting of the Parish Council; in the meantime the Council will ask the County Council for residents to be given more time to respond to the consultation.

## Books at Cross telephone box

Councillors supported a resident's request to use the telephone box for book exchange ((once circumstances in relation to coronavirus allowed)).



## Churchyard trees

A complaint had been received about the condition of the lime trees in the churchyard adjacent to Church Street, on the grounds that they were still in a dangerous condition. It was agreed to ask the District Council tree officer for advice.

## Planter box

It was agreed to purchase a new planter box at the top of the Dale to replace the one that had been damaged.

Full details of the meetings can be found in the minutes on the Parish Council page of the village website at [www.bonsallvillage.org/](http://www.bonsallvillage.org/).

The next meeting of the Parish Council is scheduled for 7.30pm on Tuesday 21 July 2020. If you have any issues to be raised at the meeting please contact the Clerk Tony Payne with details by Monday 13 July. This meeting is likely to be conducted by Zoom audio and video link. To join the 13 July meeting:

1. From a landline phone or mobile without wanting video: dial one of the following numbers: 0131 460 1196, or 0203 051 2874. Then input Meeting ID: 837 9253 7094 Password: 806765.

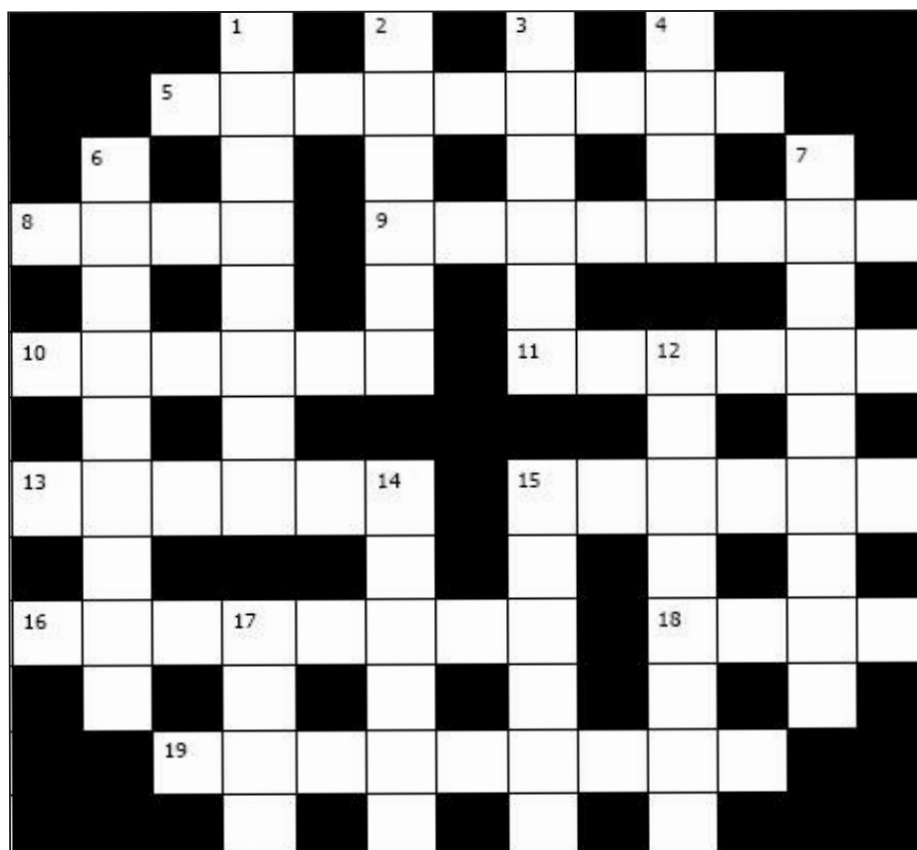
2. Via a web browser (for video or voice call or both): <https://us02web.zoom.us/j/83792537094?pwd=QVZzMjlNSCtYmM2RHRVYUhsUVZMUT09> then again use the Meeting ID and password above.

3. Alternatively, you can pass any views to be considered at the meeting to the Clerk or to a Councillor.

Clerk and Finance Officer: Tony Payne  
27 High Street DE4 2AS. T: 822311;  
email [bonsallclerk@gmail.com](mailto:bonsallclerk@gmail.com).



## CROSSWORD #118



### Across:

- 5.** One of 4. No reps travelled after sailor returned on first RoRo. (9)  
**8.** One of four found in dogma ideology. (4)  
**9.** People who have skilled 4. SAS train all over the place. (8)  
**10.** One of four suitable as a wife for Billie? (6)  
**11.** One of 4. Joey has iron resistance. (6)  
**13.** They're hairy heads of baldheaded eagles and rock doves. Seriously! (6)  
**15.** One of 4. Tinner, perhaps? (6)  
**16.** Reject princess - pig who eats everything! (8)  
**18.** One of 4. Biscuit that is missing. (4)  
**19.** One of 4. Short, rickety railing receives support. (9)

### Down:

- 1.** One of 4. Forest in Germany loses lots. (8)(8)  
**2.** Drug sampled in Ethiopia tests. (6)  
**3.** One of 4. Australian gets out of water and Rhode Islander plunges in. (6)  
**4.** Patient bloke's Steve? (4)  
**6.** One of 4. A dream displayed in short film. (9)  
**7.** Inconceivable for E.U. hand-wave? (7-2)  
**12.** One of 4. Dispenser of whisky for Scotsman? (8)  
**14.** What people with 4 often get when city is overwhelmed by arsy rebellion. (6)  
**15.** Describes someone who has one of 4 in north west of Russian kingdom, initially. (2,4)  
**17.** A detective agency is bitter. (4)

## EDITORIAL GROUP

<b>Hazel Baldwin</b>	824724
<b>Brett Biedscheid</b>	07977 200354
<b>Julie Coxall</b>	07709 697082
<b>Maggie Duggins</b>	825228
<b>Peter Fellows</b>	825267
<b>Karen Firth</b>	259483
<b>Julie Hamilton</b>	824819
<b>Dave Hicklin</b>	820884
<b>Pam McInally</b>	826306
<b>Ricky &amp; Jeanette Moss</b>	826557
<b>Jonathan Ogilvie</b>	821837

Please send us your news, views, stories and diary events by **Noon** on Wednesday **22 July** to: Editorial Group, 19 High St. or by e-mail to [mutterings@hotmail.com](mailto:mutterings@hotmail.com)

## EDITORIAL POLICY

We welcome news, views and letters on any topic provided they are attributed to an author. We review all items for obvious libellous or offensive material, but we cannot check for factual content.

Please do not send letters which are "not for publication". If you have strong feelings about what is or is not said in Mutterings, please either write to us or join the group of volunteers who enable the production of this village newsletter.

Back issues of T'Owd Man's Mutterings can be found on the Bonsall Village website – [www.bonsallvillage.org](http://www.bonsallvillage.org). Please note that your articles will appear on the website and can be picked up by search engines.

### Answers to crossword No. 117

**Across:** 5. East Acton. 8. Tube. 9. Stations. 10. Stylus. 11. London. 13. Ashore. 15. Poplar. 16. Broods on. 18. Loom. 19. Cacodemon (no, I've never heard of one, either!). **Down:** 1. Waterloo. 2. Stasis. 3. Scrawl. 4. Gobi. 6. Cutty Sark. 7. Innovator. 12. Napoleon. 14. Euston. 15. Pinner. 17. Oval.



## VILLAGE GROUPS & RESOURCES

<b>Allotments</b> Penny Collier	825591
<b>Art Club</b> Julie Leggett	07305 594084
<b>Bonsall Barn Project</b>	
Liz Stoppard/Mike Susko	823712
<b>Bonsall Camp</b>	
Matthew Quinn	07988 071682
<b>Bonsall Church Bell Ringers</b>	
Melissa Welbourne	826303
<b>Bonsall Community Library</b>	
<b>St James' Church</b> Phil Heasman	821816
<b>Bonsall History Group</b>	
Peter Greaves	822374
<b>Bonsall Map</b> Wendy Bullar	825267
<b>Bonsall Pensioners Fund</b>	
Vacant	
<b>Bonsall Riders Club</b>	
Jane Williams	825632
<b>Carnival Committee</b>	
Jackie Smith	823544
<b>Chernobyl Children's Lifeline Group</b>	
Chris Broome	824512
<b>Cromford Playgroup</b>	
Karen or Jayne	07905 937371
<b>Horticultural Society</b>	
Vacant	
<b>Kick-boxing</b>	
Hayley Capewell	07773 149935
<b>Mothers' Union</b> Di Moor	824376
<b>Open Gardens</b> Ollie Gerrish	824498
<b>Pigeon Club</b> Gordon Hardy	823549
<b>School Head</b> Lesley Murhall	822573
<b>PTFA</b> Claire Duma	07880 851083
<b>School Foundation</b>	
Clerk, Norma Rickards	822257

## RESOURCES

### Bonsall Publications

**The Bonsall Map** - wall poster £3.50 + P&P (the folded map is available from village pubs and B&Bs)

#### **Bonsall - a village & its history**

£15 paperback, £25 hardback + P&P

#### **History booklets**

£2.50-£3 or £10 for a pack of six + P&P

#### **Bonsall within living memory**

£10 + P&P

#### **80 Years of Bonsall Carnival Book**

£9.99 + P&P

#### **History Walking Guides**

pack of six £5 + P&P

All available from 19 High St., DE4 2AS, Tel: 825267, pubs or Fountain Tearoom.

### Village Hall

For bookings contact Jackie Smith  
Jaqsm@aol.com, 823544, or 07771 764366.

**Cost per session** (a session is a morning, afternoon or evening):

#### • **Village organisations:**

- £10 – one floor
- £16 – both floors

#### • **Non-village organisations:**

- £20 – one floor
- £30 – both floors

#### • **Village people private hire:**

- £25 – one floor
- £35 – both floors

#### • **Non-village people private hire:**

- £40 – one floor
- £50 – both floors

For information on sale of alcohol/ private bar, use of the Village Hall audio equipment, screening a film, or any other matters, please contact Jackie Smith. M 07771 764366  
H 823544. email. Jaqsm@aol.com  
Address. 55 Yeoman Street

## TRAVEL SERVICES

### Assisted Travel

Derbyshire Connect transport for shopping, weekdays 9am - 4pm, booked in advance. Tel: 01335 300670 between two and seven days before travel or email: info@ashbournect.org.uk.

Derbyshire Connect Active Travel to healthcare appointments, weekdays 9am - 5pm, booked in advance. Charges vary. Tel: 03333 444125 at least 48 hours in advance or email: office@sdcs.org.uk

### Bus services

Monday to Saturday. No Sunday or Bank Holiday service.

#### 216 Bus Bonsall - Matlock

Uppertown Lane: 10:03, 11:03, 12:03,

13:03, 15:03, then hourly until 18:03.

Fountain: 10:07, 11:07, 12:07, 13:07,

15:07, 18:07

Cromford, Greyhound: 10:12, 11:12,

12:12, 13:12, 15:12, 18:12.

Starkholmes, High Tor Road: 10:17,

11:19, 12:19, 13:19, 15:18, 18:18

Matlock Bakewell Road (Stand A): 10:22,

11:24, 12:24, 13:24, 15:22, 18:22

#### Matlock - Bonsall

Matlock Bakewell Road (Stand B): 09:36,

10:36, 11:36, 12:36, 14:36, 15:36, 16:36,

17:36.

Starkholmes, High Tor Road:

09:40, 10:41, 11:43, 12:43, 14:41, 15:41, 16:

41, 17:41.

Cromford, Greyhound: 09:46, 10:48, 11:50,

12:50, 14:49, 15:49, 16:49, 17:48.

Fountain: 09:49, 10:52, 11:54, 12:54, 14:54,

15:54, 16:53, 17:52.

Uppertown Lane: 09:57, 11:00, 12:02,

13:02, 15:02, 16:02, 17:01, 18:00

Timetable from <https://www.travelinedata.org.uk>. 0871 2002233

**Taxis** 822072, 813774, 826060,

07967 273237, 07815 773706

**Train services** 0845 7484950

**Travel line** 0870 6082608

### Volunteer Drivers

Loreen 822067

Richard Shipley 259809

## USEFUL NUMBERS

### Defibrillator Trained Volunteers

Richard Taylor	823704	07860 214503
Brett Taylor	824407	07950 036657
Anne Young	825186	07876 506595
Phil Addis	826309	07951 189727
John Ratcliffe		07896 924824
Maxine Ellis		07742 749854
Jo Hanby	822767	07872 641409
Julia Milverton		07584 895644

### Health

Chemists	
Wirksworth Market Place	822607
12 Bank Road, Matlock	57924
Dentists Matlock:	
584746, 55645, 582218, 56558	

#### Doctors:

NHS Direct	0845 4647
Wirksworth Hannage Brook	822434
Matlock Imperial Road	583465

### Hospitals

Chesterfield, Calow	01246 277271
Derby City	01332 340131
Derby Royal	01332 347141
Matlock Whitworth	580211
Non-emergencies	111

### Derbyshire County Council

[www.derbyshire.gov.uk](http://www.derbyshire.gov.uk)

All enquiries 580000

Out of Hours numbers: 536673 or 'Call Derbyshire' 533190 or 0845 6058058

### Derbys Dales District Council

[www.derbyshiredales.gov.uk](http://www.derbyshiredales.gov.uk)

All enquiries 761100

Environmental health 761212

#### Tourist information

Matlock	583388
Matlock Bath	583834
Trading Standards	585858
Electricity emergencies	0800 0568090
Fire station, Matlock	582849
Gas leaks	0800 111999

### Household Waste Recycling Centre

Harrison Way, Darley Dale, 8.30 – 6.00.

### Mobile Library 01773 824333

Monthly 2<sup>nd</sup> Fridays at the Fountain, 10.55–11.30 am

### Police/Safer Neighbourhoods 101

PC Pat Squires and PCSO Spencer Nixon or [matlock.neighbourhoods@derbyshire.pnn.police.uk](mailto:matlock.neighbourhoods@derbyshire.pnn.police.uk).

Crimestoppers 0800 555111

Victim support 825544

Community safety 761101

### Swimming

Matlock (Arc)	581322
Wirksworth	825704

**Vets** Matlock 582844, 581234

Wirksworth 823034